

TEXTILE BASED VENTILATION SYSTEMS

# warehouses

**KE Fibertec** ducting has been used in numerous warehouses applications; such as pharmaceutical products, wine, photographic film, department store distribution centres and chilled food distribution stores.



# warehouses

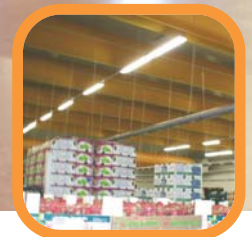
## THE BENEFITS OF KE FIBERTEC DUCTS

1. Close control of temperature
2. Space saving solution
3. Ducts can be either at high or low level under the racks (the space under the racks in automated trucking warehouses can be utilised) – advantages of access, temperature control and leaves high level free for lighting and more racks / stock
4. Free of condensation (chilled / cold stores)
5. Air throws typically 2 to 25 metres
6. Cost saving on ducting and installation



### CHOICES

1. KE-Inject® and KE-Direjet® (Chilled – KE-Low Impulse®)
2. 5 standard colours and 1600 special colours
3. 5 mm Holes (Inject), 12, 18, 24, 48 and 60 mm Nozzles (Direjet)
4. Aluminium rail or stainless steel wire
5. “O” and “D” section ducts
6. Non permeable fabric – no clogging



AIR THE WAY YOU WANT



**KE FIBERTEC**

KE Fibertec UK Ltd Suite 5, First Floor, Kingfisher House,  
Rownhams Lane, North Baddesley, Hampshire SO52 9LP

**T.** +44 (0)2380 740751 **F.** +44 (0)2380 740754  
**E.** [info@ke-fibertec.co.uk](mailto:info@ke-fibertec.co.uk) **W.** [www.ke-fibertec.co.uk](http://www.ke-fibertec.co.uk)